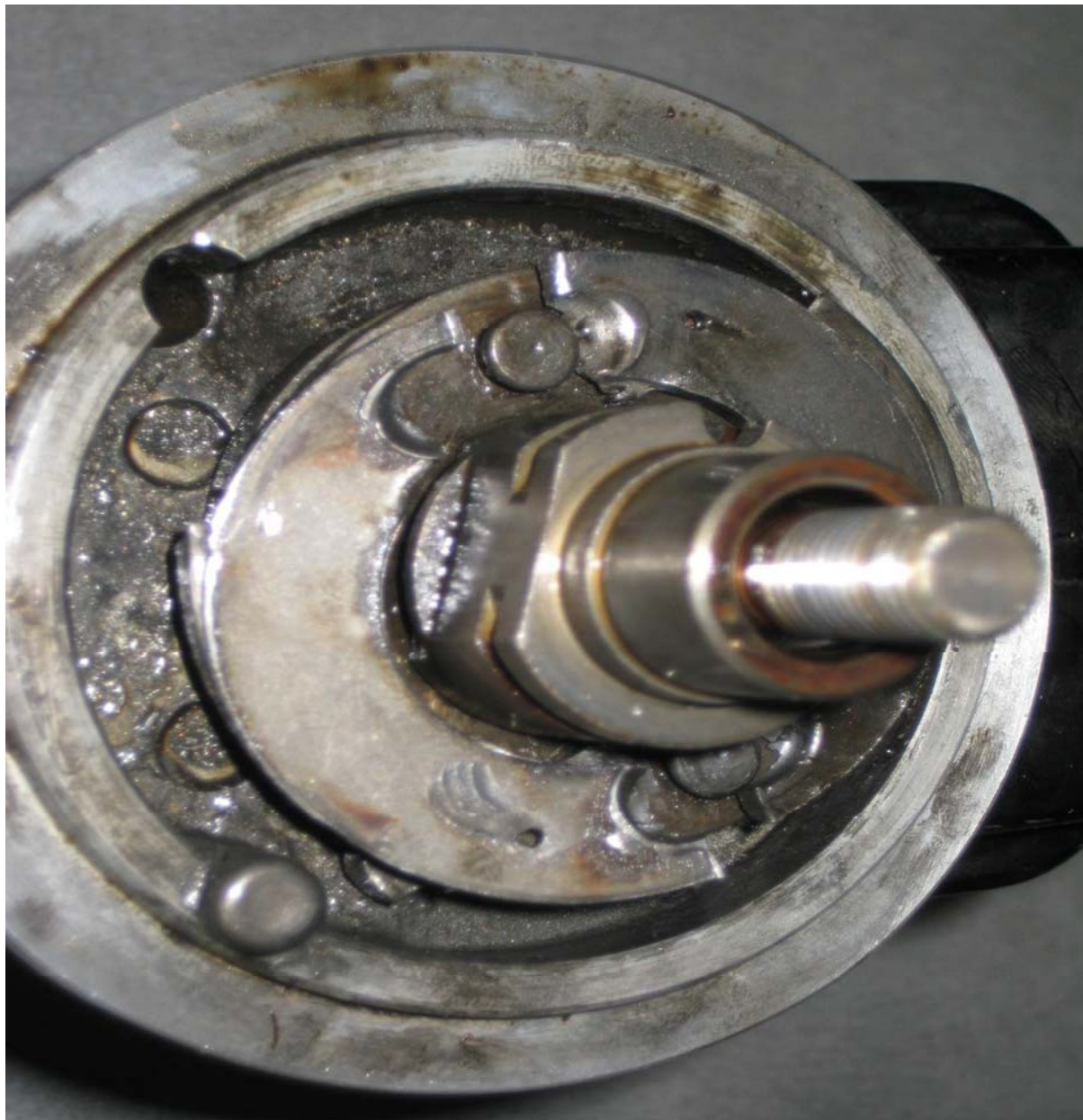


Slick Magneto 4330, Broken Impulse Coupling, ATA 7414

A general aviation submission states, "The L/H magneto on the R/H engine cut out while running the engine. After removing the magneto, (we) noticed the impulse coupling hub spacer had *(pulled)* away from the rivets and split into two pieces." (*Component number M3068. Next photo vertically compressed—Ed.*)



Slick Magneto 4330, Broken Impulse Coupling, ATA 7414



Part Total Time: 977.0 Hours